



Marshside Road

Southport, PR9 9TA

£8,000

AVAILABLE TO LET EXCLUSIVELY FOR THE ROYAL BIRKDALE GOLF OEPN 2026

PRICE ON APPLICATION

AVAILABLE FOR SHORTER STAYS

Flexi Agent are proud to present this charming four-bedroom semi-detached property, available to let exclusively for the Royal Birkdale Golf Open 2026!

Situated on Marshside Road, the home is conveniently located just 5.7 miles from Royal Birkdale Golf Club, and within easy reach of other renowned courses including Southport Golf Links and Hesketh Golf Club, making it the perfect choice for event attendees and golf enthusiasts alike.

The ground floor comprises a welcoming entrance hall, a spacious and sunlit reception room, a dedicated dining room, a rear sitting room with access to the garden, and a stylish, well-equipped kitchen — ideal for both everyday living and entertaining.

Upstairs, the property boasts three bedrooms, two of which are double and one twin bedroom on the second floor, which are accompanied by a nicely presented three piece bathroom and a contemporary three piece shower room.

- Four bedrooms (Sleeps 8 people)
- Semi detached
- Price on application
- 5.7 miles away from the Royal Birkdale Golf Club
- Three spacious and sunlit reception rooms
- Stylish kitchen
- Three piece bathroom and a three piece shower room
- Driveway parking with an electric charging point
- Sun drenched rear garden
- Viewings available upon request

Viewing

Please contact our Flexi-Agent Southport Lettings Office on 01704 889455 if you wish to arrange a viewing appointment for this property or require further information.



4



2



3



Floor Plan

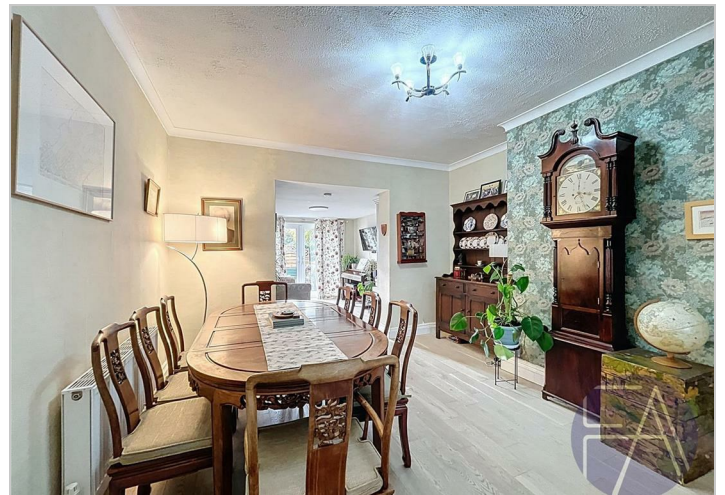


Area Map



Energy Efficiency Graph

Energy Efficiency Rating		Environmental Impact (CO ₂) Rating	
Current	Potential	Current	Potential
Very energy efficient - lower running costs		Very environmentally friendly - lower CO ₂ emissions	
(92-91) A		(92 plus) A	
(81-91) B		(81-91) B	
(69-80) C		(69-80) C	
(55-68) D		(55-68) D	
(39-54) E		(39-54) E	
(21-38) F		(21-38) F	
(1-20) G		(1-20) G	
Not energy efficient - higher running costs		Not environmentally friendly - higher CO ₂ emissions	
England & Wales		England & Wales	
EU Directive 2002/91/EC		EU Directive 2002/91/EC	



These particulars, whilst believed to be accurate are set out as a general outline only for guidance and do not constitute any part of an offer or contract. Intending purchasers should not rely on them as statements of representation of fact, but must satisfy themselves by inspection or otherwise as to their accuracy. No person in this firm's employment has the authority to make or give any representation or warranty in respect of the property.